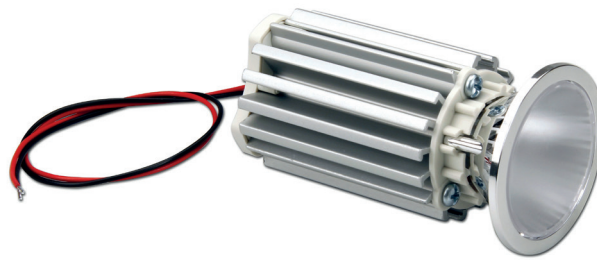


UP TO 170
lm/W

L80 B20
>150.000 h
@ tc=80 °C



constant
CURRENT

CRI
>80
>90

Rated Current
250 mA
300 mA
350 mA

Power
8,5 W
10,4 W
12,3 W

Available (CCT) colour temperature
3000 K
4000 K

6

LED SPOTS

2700 K on request - su richiesta
5000 K on request - su richiesta
5700 K on request - su richiesta
6500 K on request - su richiesta

Beam angle
20°
35°
55°

Ambient temperature
ta: -20...+45 °C
(Only for tc ≤ 90 °C)

Module temperature
tc max: 90 °C

Standards compliance
EN 55015
EN 61347-1
EN 61547
EN 62031
EN 62471

| Article Articolino | Code Codice | Temp. Color Colore | Typ Current (I typ) mA | Flux Im ⁽¹⁾ (I typ 25°C) tc | Flux Im ⁽¹⁾ (I typ 80°C) tc | V | Power W | Efficacy Tc 25°C lm/W | Efficacy Tc 80°C lm/W | ta °C | tc °C | CRI | Beam angle | |
|-----------------------------|---------------|--------------------|------------------------|--|--|------|---------|-----------------------|-----------------------|-----------|-----------|-----|------------|-----|
| LED SPOT 1000 CRI 80 | 128416/830/20 | 3000K | 250 | 1134 | 1054 | 34,3 | 8,5 | 162 | 150 | -20...+45 | 90 | >80 | 20° | |
| | | | 300 | 1344 | 1248 | 34,7 | 10,4 | 156 | 145 | -20...+45 | | | | |
| | | | 350 | 1547 | 1437 | 35,2 | 12,3 | 151 | 140 | -20...+35 | | | | |
| | 128416/830/35 | 3000K | 3000K | 250 | 1134 | 1054 | 34,3 | 8,5 | 162 | 150 | -20...+45 | 90 | >80 | 35° |
| | | | | 300 | 1344 | 1248 | 34,7 | 10,4 | 156 | 145 | -20...+45 | | | |
| | | | | 350 | 1547 | 1437 | 35,2 | 12,3 | 151 | 140 | -20...+35 | | | |
| | 128416/830/55 | 3000K | 3000K | 250 | 1134 | 1054 | 34,3 | 8,5 | 162 | 150 | -20...+45 | 90 | >80 | 55° |
| | | | | 300 | 1344 | 1248 | 34,7 | 10,4 | 156 | 145 | -20...+45 | | | |
| | | | | 350 | 1547 | 1437 | 35,2 | 12,3 | 151 | 140 | -20...+35 | | | |
| | 128416/840/20 | 4000K | 4000K | 250 | 1160 | 1053 | 34,3 | 8,5 | 170 | 158 | -20...+45 | 90 | >80 | 20° |
| | | | | 300 | 1362 | 1236 | 34,7 | 10,4 | 164 | 152 | -20...+45 | | | |
| | | | | 350 | 1553 | 1408 | 35,2 | 12,3 | 158 | 146 | -20...+35 | | | |
| 128416/840/35 | 4000K | 4000K | 250 | 1160 | 1053 | 34,3 | 8,5 | 170 | 158 | -20...+45 | 90 | >80 | 35° | |
| | | | 300 | 1362 | 1236 | 34,7 | 10,4 | 164 | 152 | -20...+45 | | | | |
| | | | 350 | 1553 | 1408 | 35,2 | 12,3 | 158 | 146 | -20...+35 | | | | |
| 128416/840/55 | 4000K | 4000K | 250 | 1160 | 1053 | 34,3 | 8,5 | 170 | 158 | -20...+45 | 90 | >80 | 55° | |
| | | | 300 | 1362 | 1236 | 34,7 | 10,4 | 164 | 152 | -20...+45 | | | | |
| | | | 350 | 1553 | 1408 | 35,2 | 12,3 | 158 | 146 | -20...+35 | | | | |
| LED SPOT 1000 CRI 90 | 128416/930/20 | 3000K | 250 | 940 | 854 | 34,3 | 8,5 | 138 | 128 | -20...+45 | 90 | >90 | 20° | |
| | | | 300 | 1103 | 1001 | 34,7 | 10,4 | 133 | 123 | -20...+45 | | | | |
| | | | 350 | 1258 | 1141 | 35,2 | 12,3 | 128 | 119 | -20...+35 | | | | |
| | 128416/930/35 | 3000K | 3000K | 250 | 940 | 854 | 34,3 | 8,5 | 138 | 128 | -20...+45 | 90 | >90 | 35° |
| | | | | 300 | 1103 | 1001 | 34,7 | 10,4 | 133 | 123 | -20...+45 | | | |
| | | | | 350 | 1258 | 1141 | 35,2 | 12,3 | 128 | 119 | -20...+35 | | | |
| | 128416/930/55 | 3000K | 3000K | 250 | 940 | 854 | 34,3 | 8,5 | 138 | 128 | -20...+45 | 90 | >90 | 55° |
| | | | | 300 | 1103 | 1001 | 34,7 | 10,4 | 133 | 123 | -20...+45 | | | |
| | | | | 350 | 1258 | 1141 | 35,2 | 12,3 | 128 | 119 | -20...+35 | | | |
| | 128416/940/20 | 4000K | 4000K | 250 | 994 | 903 | 34,3 | 8,5 | 146 | 135 | -20...+45 | 90 | >90 | 20° |
| | | | | 300 | 1167 | 1059 | 34,7 | 10,4 | 140 | 130 | -20...+45 | | | |
| | | | | 350 | 1330 | 1207 | 35,2 | 12,3 | 135 | 126 | -20...+35 | | | |
| 128416/940/35 | 4000K | 4000K | 250 | 994 | 903 | 34,3 | 8,5 | 146 | 135 | -20...+45 | 90 | >90 | 35° | |
| | | | 300 | 1167 | 1059 | 34,7 | 10,4 | 140 | 130 | -20...+45 | | | | |
| | | | 350 | 1330 | 1207 | 35,2 | 12,3 | 135 | 126 | -20...+35 | | | | |
| 128416/940/55 | 4000K | 4000K | 250 | 994 | 903 | 34,3 | 8,5 | 146 | 135 | -20...+45 | 90 | >90 | 55° | |
| | | | 300 | 1167 | 1059 | 34,7 | 10,4 | 140 | 130 | -20...+45 | | | | |
| | | | 350 | 1330 | 1207 | 35,2 | 12,3 | 135 | 126 | -20...+35 | | | | |

⁽¹⁾ The written flux includes the 20% losses due to the reflector - Il flusso riportato include la perdita del 20% dovuta al riflettore

Main features

- LED SPOT for built-in use.
- Polycarbonate spotlight 50mm diameter.
- PMMA diffusing or transparent lens to cover the spotlight.
- Minimum colour tolerance: 3MacAdam (3SDCM).
- Perfect light uniformity.
- Anodized aluminium heat sink.
- Provided with power wires and tear-proof cable clamps.
- Emitting angle: 20°/35°/55°.
- High efficiency of the system in combination with TCI drivers.
- The use is guaranteed in combination with TCI drivers only.

Caratteristiche principali

- SPOT LED da incorporare.
- Riflettore in policarbonato Diametro 50 mm.
- Lente diffondente o trasparente in PMMA a copertura del riflettore.
- Minima tolleranza di colore: 3MacAdam (3SDCM).
- Perfetta uniformità di luce.
- Dissipatore in alluminio anodizzato.
- Provvisto di cavi di alimentazione e fissacavo antistrappo.
- Angolo di emissione: 20°/35°/55°.
- Alta efficienza del sistema in combinazione con driver TCI.
- L'utilizzo è garantito in combinazione con driver TCI.

7 YEARS WARRANTY
3% FAILURE RATE

10 YEARS WARRANTY
5% FAILURE RATE

PRODUCER'S LIABILITY
TCI

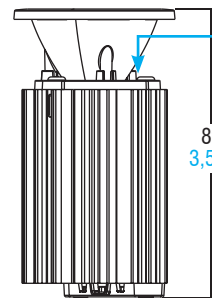
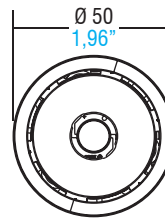
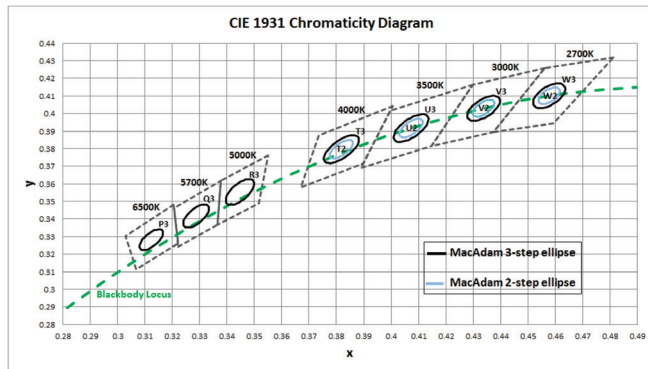
WARRANTY 10 YEARS
ACCORDING TO THE EUROPEAN CONSUMER 2014

LED spots

Technical features - Caratteristiche tecniche

Chromaticity region & Coordinates ($I_f=360\text{ mA}$, $T_j=85\text{ °C}$)

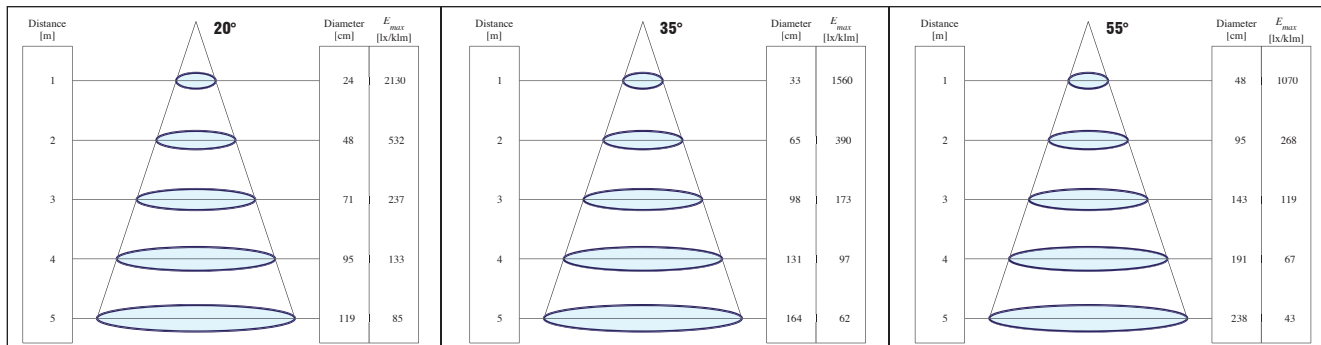
LED SPOT 1000 (Weight/Peso **4,58 oz.** / gr. 130 - Pcs/Pezzi 1)



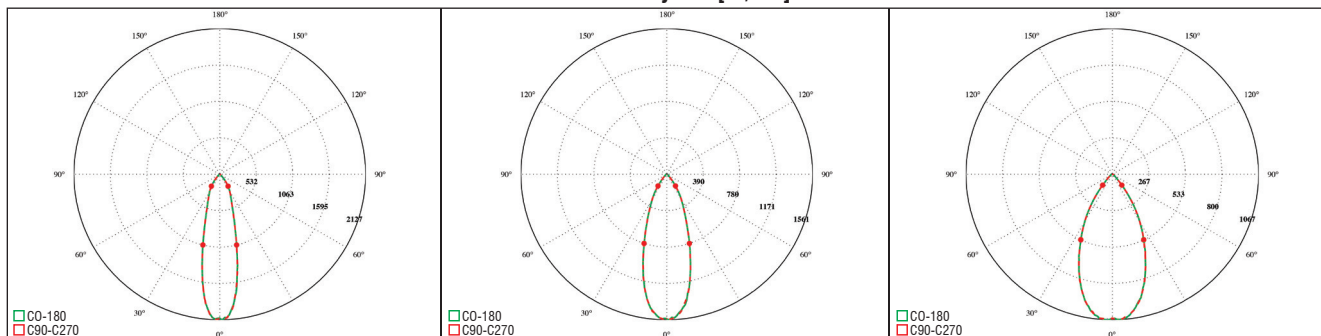
The **tc point** is on the welding point between the COB and the black wire

tc point è preso sul punto di saldatura tra piazzola COB e filo nero

Illuminance Diagram [Lx/klm]



Polar Intensity Plot [cd/klm]



I dati indicati sono stati rilevati a CCT 4000K CRI>90 @350mA, Tc=80°C

LED driver choice table - Tabella di scelta driver

| Article | Current | Power | Standard Driver | | Standard Driver PFC>0,9 | | Dimmable 1-10V & PUSH | | Dimmable DALI | |
|---------------|---------|-------|------------------|---------------|-------------------------|--------------|-----------------------|---------------|----------------|---------------|
| | | | Article | Code | Article | Code | Article | Code | Article | Code |
| LED SPOT 1000 | 250 | 8,7 | MP 15 | 122360 | UNIVERSALE 20 | 122201 | MINIJOLLY LC | 123401-151401 | MINIJOLLY DALI | 125403-151403 |
| | | | DCC 10W 250mA US | 122358 | UNIVERSALE LC | 122203 | | | | |
| | 300 | 10,6 | MP 15 | 122360 | UNIVERSALE LC | 122203 | MINIJOLLY LC | 123401-151401 | - | - |
| | | | DCC 15W 350mA US | 122350 | UNIVERSALE 20 | 122201 | MINIJOLLY | 125400-151400 | MINIJOLLY DALI | 125403-151403 |
| 350 | 12,5 | MP 15 | 122360 | UNIVERSALE LC | 122203 | MINIJOLLY LC | 123401-151401 | | | |

| Article | Code | Rated Voltage | P out W ⁽¹⁾ | V out | dimension (mm) | Ø mm | Efficiency (100 %) ⁽¹⁾ η | ta °C | tc °C | Power Factor λ | Dimmable |
|------------------|---------------|---------------|------------------------|-------|----------------|------|-------------------------------------|--------|-------|----------------|----------------|
| DCC 10W 250mA | 122358 | 110-240 | 10 | 43 | 115x34x19 | 40 | 73 | -25+50 | 75 | 0,6 C | NO |
| DCC 15W 350mA | 122350 | 110-240 | 15 (10) | 43 | 115x34x19 | 40 | 77 | -25+45 | 75 | 0,6 C | NO |
| MP 15 | 122360 | 100-240 | 15 (10) | 41,5 | 115x34x19 | 40 | 82 | -25+50 | 75 | 0,6 C | NO |
| UNIVERSALE 20 | 122201 | 220-240 | 20 | 57 | 110x52x22 | 55 | >88 | -25+50 | 80 | 0,95 | NO |
| UNIVERSALE 20 LC | 122203 | 220-240 | 20 | 55 | 110x52x22 | 55 | >87 | -25+50 | 75 | 0,95 | NO |
| MINIJOLLY | 125400-151400 | 110-240 | 20 | 43 | 110x52x22 | 55 | >87 | -25+50 | 80 | 0,95 | 1...10V - PUSH |
| MINIJOLLY LC | 123401-151401 | 110-240 | 20 | 43 | 110x52x22 | 55 | >87 | -25+45 | 75 | 0,95 | 1...10V - PUSH |
| MINIJOLLY DALI | 125403-151403 | 110-240 | 20 | 43 | 110x52x22 | 55 | >87 | -25+45 | 75 | 0,95 | DALI |

⁽¹⁾ Referred to $V_{in} = 230\text{ V}$, 100% load - Riferito a $V_{in} = 230\text{ V}$, carico 100%

For additional technical informations please visit our website: www.tci.it